

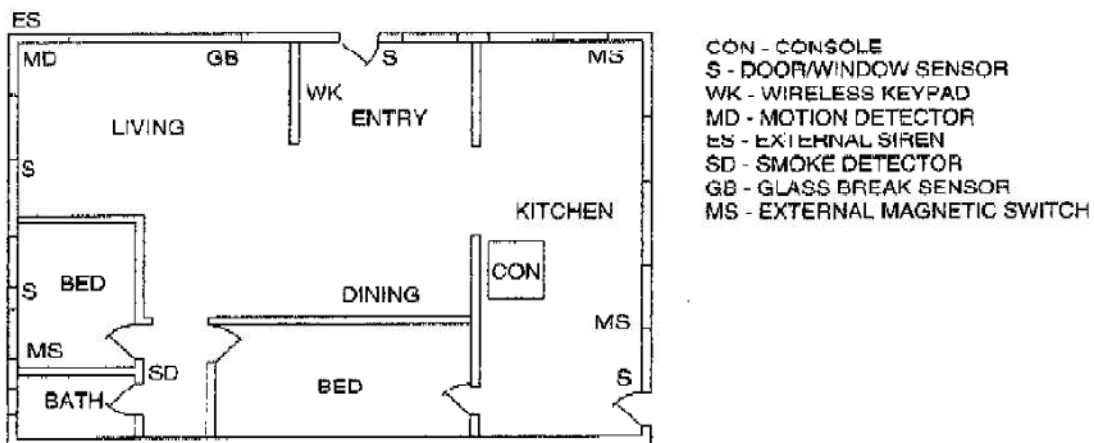
Security System Floor Plan

Example System

- The example shows a typical DVC-1200
- Any or all of the accessories shown can be Used.
- A total of 12 sensors (including keypads) can be used with each Console.

Design The Installation

- Create a floor plan of the installation.
- Consider the security needs of the premises.
- Determine which doors and windows are vulnerable to intrusion.
- Figure which interior areas an intruder might go to if unlawful entrance is gained.
- Indicate locations for door/window sensors, Interior motion detectors, keypads, glass break detectors and external siren speakers.
- Decide on a centralized location for the security Console.
- Never locate a sensor where its transmission is face to face to another sensor.
- Locate the Console near a telephone jack and an un-switched electrical outlet.



NOTE: IN NEW CONSTRUCTION, NFPA 71 REQUIRES A SMOKE DETECTOR LOCATED *INSIDE* EACH BEDROOM AS WELL AS A SMOKE DETECTOR ON EACH LEVEL.

Example Residential Security System Floor Plan

Contact Affordable Alarms for more information at: (info@a4alarms.com)